

**PRODUCT SPECIFICATION**

Barbara Luijckx sp. z o. o.

Article data modified on

01-10-24

Article number

3325473

Alternative number

Description

Chocolate Dots

Food &amp; Chocolate Regulation Act Description

Chocolate dark

ANNA

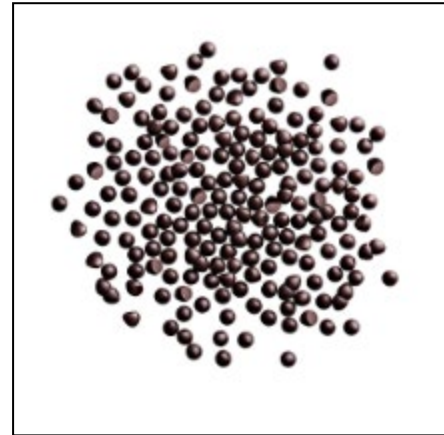
Page 1

**Packaging**

Net weight	3,0 kg
Gross weight	3,163 kg
Amount of units per outer carton	6
Amount of layers per pallet	4
Outers/Cartons per pallet 80/120	36

**Physical characteristics**

Colour	dark brown
Pieces	approx. 100 000 pcs/kg *
Odour	typical
Taste	typical
Texture	homogeneous

**Ingredients**

Cocoa mass	46,2 % cocoa beans, Ivory Coast, Nigeria, Cameroon, Ghana
Sugar	46,2 % sugar beet or cane, Germany, France
Cocoa butter	7,0 % cocoa beans, Ivory Coast, Nigeria, Cameroon, Ghana
Emulsifier: E322 (sunflower lecithin)	< 1,0 % Hungary, Argentina
Natural vanilla flavouring	< 1,0 % Madagascar

**Physico-chemical specification**

Criteria	Value	Method
Moisture	max 1,0 %	IOCCC
Total fat	approx. 31,5 %	IOCCC
Dry cocoa solids	min. 52,0 %	-
Dry fat free cocoa solids	approx. 20,9 %	-

**Microbiological specification**

Criteria	Max. value	Method
Total plate count	5.000 cfu/g	ISO 4833
Yeasts	50 cfu/g	ISO 21527-2
Moulds	50 cfu/g	ISO 21527-2
Enterobacteriaceae	10 cfu/g	ISO 21528
E coli	0/g	ISO 16649
Salmonella	0/250g	ISO 6579

**Storage and transport conditions**

Temperature between 12 – 20 °C, and max 70% relative humidity.

Away from foreign odours and out of direct sunlight.

**Shelf life**

24 months

**Additional information**May contain *MILK* and *SOYA*.

\* The above mentioned quantities are average standard value. Due to the nature of production process, the weight of product is its basic parameter, the quantity per kg is rough value and can deviate from given value. Due to the nature of our production process, shade of colour in products in each production batch can slight differ. Appearance of product's abrasions and local tints is the result of production process.

**PRODUCT SPECIFICATION**

Barbara Luijckx sp. z o. o.

Article data modified on

01-10-24

Article number

3325473

Alternative number

Description

Chocolate Dots

Food &amp; Chocolate Regulation Act Description

Chocolate dark

ANNA

Page 2

**Nutritional information**

Reference	Values/100g	
Energy value	524	kcal
Energy value	2171	kJ
Protein	5,5	g
Carbohydrates	49,4	g
of which sugar	46,3	g
of which starch	3,0	g
Fat	31,5	g
of which saturated fatty acids	19,5	g
of which mono-unsaturated fatty acids	11,0	g
of which poly-unsaturated fatty acids	1,0	g
Fibre	7,7	g
Salt	0,01	g
This nutritional information of typical values based upon information of suppliers.		

**Allergen**

Regarding Regulation EU 1169/2011	Present	Cross contamination
Cereals containing gluten and products thereof	No	No
Crustaceans and products thereof	No	No
Eggs and products thereof	No	No
Fish and products thereof	No	No
Peanuts and products thereof	No	No
Soybeans and products thereof	No	Yes
Milk and products thereof (including lactose)	No	Yes
Nuts and products thereof	No	No
Celery and products thereof	No	No
Mustard and products thereof	No	No
Sesame seeds and products thereof	No	No
Sulphur dioxide and sul-phites (more than 10 mg/kg)	No	No
Lupine and products thereof	No	No
Molluscs and products thereof	No	No

Suitable for vegetarians	Yes
Suitable for vegans	No

**GMO**

The product is not produced on the base of genetically modified raw materials, according to the EU-regulation (EC) 1829/2003 and 1830/2003 there is on labelling required.

**IRRADIATION**

This product is not irradiated.

**NANOTECHNOLOGY**

This product does not contain and is no engineered nanomaterial.

**PRODUCT SPECIFICATION**

Barbara Luijckx sp. z o. o.

Article data modified on

01-10-24

Article number

3325473

Alternative number

Description

Chocolate Dots

Food &amp; Chocolate Regulation Act Description

Chocolate dark

ANNA

Page 3

**Used packaging**

Number	Used packaging	Dimensions (lxwxh)	Amount	Unit	Material
	Outer carton	490x175x335 mm	0,166	Pieces	Cardboard
	Unit carton	165x170x170 mm	1	Pieces	Cardboard
	Foil bag		1	Pieces	PE
	Unit label		1	Pieces	Paper
	Outer label		0,166	Pieces	Paper
	EUR-pallet	1200x800x1490 mm	1	Pieces	Wood
	Foil		1	Pieces	PE
	Tape		1	Pieces	PP

**Composition of primary packing**

PE 7,5 g

Paper 2,0 g

Cardboard 87,5 g

Total weight of primary packing 97,0 g

**Composition of secondary packing**

Cardboard 66,0 g

**Composition of tertiary packing**

Wood 25,0 kg

PE 0,5 kg

PP 0,04 kg

**BARBARA LUIJCKX sp. z o. o.****88-100 Inowroclaw, Latkowo 40****Tel. (0048) 52 358 07 00-14, Fax. (0048) 52 358 07 16****www.barbara-luijckx.pl, e-mail:decor@barbara-luijckx.pl***Anna Kłopotek***Anna Kłopotek**