

Changed Apr 24, 2025 00:00

Reviewed Apr 23, 2025 15:06

Erudus ID f01f5575136440c7813377b9dcc1b74f

Version 2.0

WAF141 Marseille Waffle Cone (288)

Marseille Waffle Cone 288x18g

PRODUCT DESCRIPTION

Moulded golden brown ice cream cones designed for scooped or soft ice cream.

Brand	Wafer Enterprise Ltd
Manufacturer Product Code	WAF141
Effective Date	Apr 23, 2025
Product Type	Drink
Product Category	Other
Storage Type	Ambient
Erudus ID	f01f5575136440c7813377b9dcc1b74f
Specification Type	Generic



INGREDIENTS

Ingredient Declaration

WHEAT Flour, Sugar, Emulsifier: **SOYA** Lecithin., **WHEAT** fibre, Coconut fat, **SOYA** Oil, Flavour, Release Agent: E504., Salt

ALLERGENS

Product Contains:

Celery/Celериac	No	Mustard	No
Cereals Containing Gluten	Yes	Nuts (Tree)	No
Barley	No	Almond nuts	No
Oats	No	Brazil nuts	No
Rye	No	Cashew nuts	No
Wheat (including Spelt and Khorasan)	Yes	Hazelnuts	No
Crustacea	No	Macadamia (Queensland) nuts	No
Eggs	May Contain	Pecan nuts	No
Fish	No	Pistachio nuts	No
Lupin	No	Walnuts	No
Milk	May Contain	Peanuts	May Contain
Molluscs	No	Sesame Seeds	No
		Soybeans	Yes
		Sulphur Dioxide and Sulphites	May Contain

Risk Source:

Eggs (Risk Source)	Factory	Milk (Risk Source)	Factory
---------------------------	---------	---------------------------	---------

Additional Allergen Information

May contain milk and egg. Packed in a facility that also handles Peanuts and Sulphites.

SUPPLEMENTARY INGREDIENT INFORMATION ADDITIVES

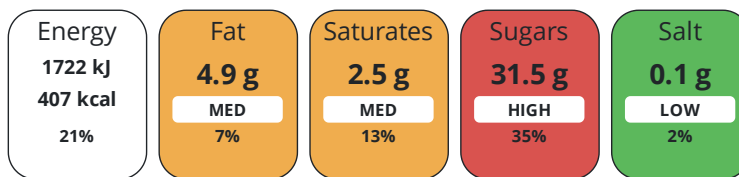
GM Protein/DNA	No		
Product Contains:			
Artificial Antioxidants	No	Artificial Flavourings	No
Artificial Colours	No	Artificial Preservatives	No
Artificial Flavour Enhancers	No	Artificial Sweeteners	No

DIET
SUITABILITY

Vegan Diet	No	Vegetarian Diet	Suitable for
Halal Diet	No	Kosher Diet	No

NUTRITIONAL
INFORMATION

Each 100g/ml portion contains:



of your reference intake.

Typical values per 100g/ml : Energy 407kcal / 1722kJ

Nutrient	per 100g	RI per 100g
Energy (kJ)	1722 kJ	21%
Energy (kcal)	407 kcal	20%
Fat	4.9 g	7%
of which Saturates	2.5 g	13%
Carbohydrate	81.1 g	31%
of which Sugars	31.5 g	35%
Protein	7.13 g	14%
Salt	0.1 g	2%

SUPPLEMENTARY
NUTRITIONAL
INFORMATION

HANDLING &
STORAGE
INFORMATION

Directions For Use

Remove product from packaging and consume. Product can be consumed on it's or with ice cream

Storage Instructions

Store at room temperature, in a dry place

Shelf Life from Time of Production 504 Days

SALSA (Safe & Local Supplier Approval)

ACCREDITATIONS/
CERTIFICATIONS/
ASSURANCE
SCHEMES
ORIGIN

Product Country of Origin Northern Ireland

Origin of the Primary Ingredient Germany

PRODUCT
CHARACTERISTICS

Standards Testing

Do you undertake trend analysis of microbiological results? No

Is shelf life testing undertaken? No

CONFIGURATION

Case Configuration

Inner Pack Configuration

Total Quantity of Inner Components in Outer Case 288 Units

PRODUCT
WEIGHTS

Inner Component

Variable Weight Consumer Item No

Inner Component Weight 18 g

Outer Case

Outer Case Gross Weight 5.76 kg

Outer Case Net Weight 5.18 kg

PRODUCT DIMENSIONS

Inner Component	
Inner Component Depth	154 mm
Inner Component Width	57 mm
Inner Component Height	0 mm
Outer Case	
Outer Case Depth	505 mm
Outer Case Width	280 mm
Outer Case Height	300 mm

PALLET INFORMATION

Quantity of Cases Per Pallet Layer	6 Cases	Pallet Height	2 MTR
Quantity of Layers Per Pallet	6 Layers		
Quantity of Cases Per Pallet	36 Cases		

OTHER INFORMATION CONTACT INFORMATION

Address
Wafer Enterprise Ltd
7 Skeoge Industrial Food Park,
Londonderry
Derry
Northern Ireland
BT48 8SE
United Kingdom

P: (Phone) 028 71357135

Complaints Contact

Wafer Ltd Team
Customer Service
sales@waferltd.co.uk

P: (Phone) 028 71357135

Technical Contact

Amy Mc Guckin
Quality Technician
qualitytechnician@waferltd.co.uk

P: (Phone) 028 71357135

Commercial Contact

Wafer Ltd Team
Sales Team
sales@waferltd.co.uk

P: (Phone) 028 71357135

The information on the [Erudus System](#) has been supplied by the manufacturers of the products and, whilst the owners of the Erudus System take steps to ensure the information is regularly updated, they give no warranty and no guarantee that the information is accurate. Product information and ingredients may change, please always read product labels carefully in addition to using the information provided by Erudus.

We do not accept liability for any inaccuracies or incorrect information contained on this site.
Please visit <http://www.erudus.com/terms-and-conditions> for full terms and conditions.