

Changed Apr 28, 2025 15:55

Reviewed Apr 28, 2025 15:55

Erudus ID b4cb52792d0c48eb99888c099419d801

Version 4.0

WAF127 Large Plain Waffle Cone (80)

Waf127 Large Plain Waffle Cone (80)

PRODUCT DESCRIPTION

Moulded gold-brown ice cream cones designed for scooped or soft ice cream

Brand	Wafer Enterprise Ltd
Manufacturer Product Code	WAF127
Manufacturer Version	2
Number	
Product Type	Food
Product Category	Biscuits, Wafers and Crackers
Storage Type	Ambient
Erudus ID	b4cb52792d0c48eb99888c099419d801
Specification Type	Bakery Products
Inner Pack GTIN	5020243040002
Outer Case GTIN	5020243040002



INGREDIENTS

Ingredient Declaration

WHEAT flour, sugar, coconut fat, emulsifier: SOYA lecithin, WHEAT fibre, SOYA oil, flavour, release agent: E504, salt

ALLERGENS

Product Contains:

Celery/Celeriac	No	Mustard	No
Cereals Containing Gluten	Yes	Nuts (Tree)	No
Barley	No	Almond nuts	No
Oats	No	Brazil nuts	No
Rye	No	Cashew nuts	No
Wheat (including Spelt and Khorasan)	Yes	Hazelnuts	No
Crustacea	No	Macadamia (Queensland) nuts	No
Eggs	May Contain	Pecan nuts	No
Fish	No	Pistachio nuts	No
Lupin	No	Walnuts	No
Milk	May Contain	Peanuts	May Contain
Molluscs	No	Sesame Seeds	No
		Soybeans	Yes
		Sulphur Dioxide and Sulphites	May Contain

Risk Source:

Eggs (Risk Source)	Factory	Milk (Risk Source)	Factory
Peanuts (Risk Source)	Factory	Sulphur Dioxide and Sulphites (Risk Source)	Factory

Allergen Statement On Pack

May contain milk and egg. Packed in a facility that handles peanuts and sulphites.

SUPPLEMENTARY
INGREDIENT
INFORMATION
ADDITIVES

GM Protein/DNA No

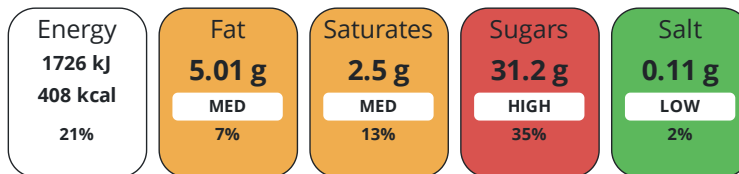
Product Contains:

DIET
SUITABILITY

Vegetarian Diet Suitable for

NUTRITIONAL
INFORMATION

Each 100g/ml portion contains:



of your reference intake.

Typical values per 100g/ml : Energy 408kcal / 1726kJ

Nutrient	per 100g	RI per 100g
Energy (kJ)	1726 kJ	21%
Energy (kcal)	408 kcal	20%
Fat	5.01 g	7%
of which Saturates	2.5 g	13%
Carbohydrate	81.4 g	31%
of which Sugars	31.2 g	35%
Protein	6.88 g	14%
Salt	0.11 g	2%

Source of Nutritional Information Manufacturers analysis

SUPPLEMENTARY
NUTRITIONAL
INFORMATION

HANDLING &
STORAGE
INFORMATION

Directions For Use

Remove product from packaging and consume. Product can be consumed on it's or with ice cream

Storage Instructions

Store at room temperature, in a dry place

Shelf Life from Time of Production 547 Days

ACCREDITATIONS/
CERTIFICATIONS/
ASSURANCE
SCHEMES
ORIGIN

SALSA (Safe & Local Supplier Approval)

Product Country of Origin Northern Ireland

Origin of the Primary Ingredient Germany

PRODUCT
CHARACTERISTICS
CONFIGURATION

Standards Testing

Case Configuration

Variable Inner Components in Outer Case No

Total Quantity of Inner Components in Outer Case 80 Units

Is the Outer Case Splittable? No

Inner Pack Configuration

Is Inner Pack Splittable? No

Quantity of Inner Components in Inner Pack 126

Is the Inner Pack Splittable? No

PRODUCT WEIGHTS

Inner Component	
Variable Weight Consumer Item	Yes
Outer Case	
Outer Case Gross Weight	3.28 kg
Outer Case Net Weight	2.67 kg

PRODUCT DIMENSIONS

Inner Component	
Inner Component Depth	0 mm
Inner Component Width	21 mm
Inner Component Height	160 mm
Outer Case	
Outer Case Depth	380 mm
Outer Case Width	295 mm
Outer Case Height	190 mm

PALLET INFORMATION

Quantity of Cases Per Pallet Layer	9 Cases	Pallet Type	Euro Pallet
Quantity of Layers Per Pallet	9 Layers	Pallet Height	2 MTR
Quantity of Cases Per Pallet	81 Cases		

OTHER INFORMATION CONTACT INFORMATION

Address
 Wafer Enterprise Ltd
 7 Skeoge Industrial Food Park,
 Londonderry
 Derry
 Northern Ireland
 BT48 8SE
 United Kingdom

P: (Phone) 028 71357135

Complaints Contact
 Wafer Ltd Team
 Customer Service
 sales@waferltd.co.uk

P: (Phone) 028 71357135

Technical Contact

Amy Mc Guckin
 Quality Technician
 qualitytechnician@waferltd.co.uk

P: (Phone) 028 71357135

Commercial Contact

Wafer Ltd Team
 Sales Team
 sales@waferltd.co.uk

P: (Phone) 028 71357135

The information on the [Erudus System](#) has been supplied by the manufacturers of the products and, whilst the owners of the Erudus System take steps to ensure the information is regularly updated, they give no warranty and no guarantee that the information is accurate. Product information and ingredients may change, please always read product labels carefully in addition to using the information provided by Erudus.

We do not accept liability for any inaccuracies or incorrect information contained on this site. Please visit <http://www.erudus.com/terms-and-conditions> for full terms and conditions.