

Changed Jan 26, 2024 12:18

Reviewed Jan 26, 2024 12:18

Erudus ID 32324802ed314a0daabaf444aa0baf99

Version 1.0

WAF111 Tall Plain Waffle Cone (135)

Waf111 135x17.5g

PRODUCT DESCRIPTION

Moulded gold-brown ice cream cones designed for scooped or soft ice cream.

Brand	Wafer Enterprise Ltd
Manufacturer Product Code	WAF111
Manufacturer Version Number	2
Product Type	Food
Product Category	Biscuits, Wafers and Crackers
Storage Type	Ambient
Erudus ID	32324802ed314a0daabaf444aa0baf99
Specification Type	Bakery Products
Outer Case GTIN	5020243040033



INGREDIENTS

Ingredient Declaration

WHEAT flour, sugar, coconut fat, emulsifier: SOYA lecithin. WHEAT fibre, SOYA oil, flavour, release agent: E504. Salt

ALLERGENS

Product Contains:

Celery/Celeriac	No	Mustard	No
Cereals Containing Gluten	Yes	Nuts (Tree)	No
Barley	No	Almond nuts	No
Oats	No	Brazil nuts	No
Rye	No	Cashew nuts	No
Wheat (including Spelt and Khorasan)	Yes	Hazelnuts	No
Crustacea	No	Macadamia (Queensland) nuts	No
Eggs	No	Pecan nuts	No
Fish	No	Pistachio nuts	No
Lupin	No	Walnuts	No
Milk	May Contain	Peanuts	May Contain
Molluscs	No	Sesame Seeds	No
		Soybeans	Yes
		Sulphur Dioxide and Sulphites	May Contain

Risk Source:

Milk (Risk Source)	Line
Sulphur Dioxide and Sulphites (Risk Source)	Factory

Additional Allergen Information

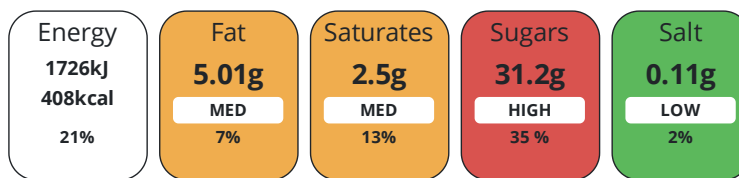
This product contains GLUTEN, WHEAT and SOYA. This product is packed in a factory that also handles MILK, SULPHITES and PEANUTS

SUPPLEMENTARY
INGREDIENT
INFORMATION
ADDITIVES

GM Protein/DNA	No	Alcoholic Strength %Vol (ABV)	0 % Vol
<i>Product Contains:</i>			
Vegan Diet	No	Vegetarian Diet	Suitable for
Halal Diet	No	Kosher Diet	No

NUTRITIONAL
INFORMATION

Each 100g/ml portion contains:



of your reference intake.

Typical values per 100g/ml : Energy 408kcal / 1726kj

Nutrient	per 100g	RI per 100g
Energy (kJ)	1726 kJ	21%
Energy (kcal)	408 kcal	20%
Fat	5.01 g	7%
of which Saturates	2.5 g	13%
Carbohydrate	81.4 g	31%
of which Sugars	31.2 g	35%
Fibre	4.97 g	
Protein	6.88 g	14%
Salt	0.11 g	2%
Sodium	40 mg	

Source of Nutritional Information Manufacturers analysis

VITAMINS AND
MINERALS

Nutrient	per 100g	RI per 100g
Vitamin A	0 µg	0%
Vitamin C	0 mg	0%
Folate/Folic Acid	0 µg	0%
Calcium	0 mg	0%
Iron	0 mg	0%
Zinc	0 mg	0%

SUPPLEMENTARY
NUTRITIONAL
INFORMATION

HANDLING &
STORAGE
INFORMATION

Directions For Use

Remove product from packaging and consume. Product can be consumed on it's or with ice cream.

Storage Instructions

Store at room temperature, in a dry place.

Shelf Life from Time of Production	547 Days	Exempt From Shelf Life Labelling	No
---	----------	---	----



ORIGIN	Product Country of Origin/Place of Provenance		Northern Ireland			
PRODUCT CHARACTERISTICS	Standards Testing					
	Do you undertake trend analysis of microbiological results?	Yes	Is shelf life testing undertaken?		No	
CONFIGURATION	Case Configuration		Inner Pack Configuration			
	Total Quantity of Inner Components in Outer Case	135 Units				
PRODUCT WEIGHTS	Inner Component					
	Variable Weight Consumer Item	No				
	Inner Component Weight	17.5 g				
	Net Drained Weight	0 g				
	Outer Case					
	Outer Case Gross Weight	2.26 kg				
PRODUCT DIMENSIONS	Outer Case Net Weight		0.02 kg			
	Inner Component					
	Inner Component Depth	50 mm				
	Inner Component Width	0 mm				
	Inner Component Height	161 mm				
	Outer Case					
PALLET INFORMATION	Outer Case Depth	380 mm				
	Outer Case Width	295 mm				
	Outer Case Height	190 mm				
	Quantity of Cases Per Pallet Layer	9 Cases	Pallet Height		2 MTR	
PACKAGING	Quantity of Layers Per Pallet	9 Layers				
	Quantity of Cases Per Pallet	81 Cases				
	Inner Component Packaging					
OTHER INFORMATION	Commodity Code	1905329900				
	Address		Technical Contact			
CONTACT INFORMATION	Wafer Enterprise Ltd		Amy Mc Guckin			
	7 Skeoge Industrial Food Park, Londonderry		Quality Technician qualitytechnician@waferltd.co.uk			
	Derry					
	Northern Ireland		P: (Phone) 028 71357135			
	BT48 8SE					
	United Kingdom					
	P: (Phone) 028 71357135					

The information on the [Erudus System](#) has been supplied by the manufacturers of the products and, whilst the owners of the Erudus System take steps to ensure the information is regularly updated, they give no warranty and no guarantee that the information is accurate. Product information and ingredients may change, please always read product labels carefully in addition to using the information provided by Erudus.

We do not accept liability for any inaccuracies or incorrect information contained on this site.
Please visit <http://www.erudus.com/terms-and-conditions> for full terms and conditions.