

NEW WAF105 Tall Chocolate Flavoured Waffle Cone (120)

Tall Chocolate Flavoured Waffle Cone

PRODUCT DESCRIPTION

Moulded gold-brown ice cream cones designed for scooped or soft ice cream, enrobed in chocolate flavouring.

Brand	Wafer Enterprise Ltd
Manufacturer Product Code	WAF105 WIP
Manufacturer Version	2
Number	
Product Type	Food
Product Category	Biscuits, Wafers and Crackers
Storage Type	Ambient
Erudus ID	c79b4eced9ac4062b6d851b0f13bbf55
Specification Type	Bakery Products

Inner Component GTIN 5020243050131



INGREDIENTS

Ingredient Declaration

WHEAT Flour, Sugar, Coconut Fat, Emulsifier: **SOYA** Lecithin, **WHEAT** Fibre, **SOYA** Oil, Flavour, Release Agent: E504, Salt (74%), Sugar, Vegetable Oil (19%) (Palm, Palm Kernel), Fat Reduced Cocoa Powder, Fortified **WHEAT** Flour (**WHEAT** Flour, Calcium Carbonate, Niacin, Iron, Thiamine), Whey Powder (**MILK**), Emulsifiers: Lecithin (**SOYA**), E476; Natural Flavouring. [**BARLEY**], Sugar 54.5%; Vegetable Fat (6%) (Palm Kernel) 32.0%; Fat-Reduced Cocoa Powder 13.0%; Emulsifier: Lecithin (**Soya**) <1%; Natural Vanilla Flavouring <1% [**MILK**]

ALLERGENS

Product Contains:

Celery/Celery	No	Mustard	No
Cereals Containing Gluten	Yes	Nuts (Tree)	No
Barley	Yes	Almond nuts	No
Oats	No	Brazil nuts	No
Rye	No	Cashew nuts	No
Wheat (including Spelt and Khorasan)	Yes	Hazelnuts	No
Crustacea	No	Macadamia (Queensland) nuts	No
Eggs	No	Pecan nuts	No
Fish	No	Pistachio nuts	No
Lupin	No	Walnuts	No
Milk	Yes	Peanuts	May Contain
Molluscs	No	Sesame Seeds	No
		Soybeans	Yes
		Sulphur Dioxide and Sulphites	May Contain

Risk Source:

Peanuts (Risk Source)	Factory	Sulphur Dioxide and Sulphites (Risk Source)	Factory
------------------------------	---------	----------------------------------------------------	---------

Additional Allergen Information

Packed in a facility that handles Peanuts and Sulphites

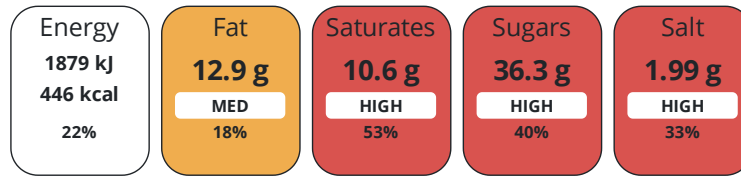
SUPPLEMENTARY
INGREDIENT
INFORMATION
ADDITIVES

GM Protein/DNA No

Product Contains:

NUTRITIONAL
INFORMATION

Each 100g/ml portion contains:



of your reference intake.

Typical values per 100g/ml : Energy 446kcal / 1879kJ

Nutrient	per 100g	RI per 100g
Energy (kJ)	1879 kJ	22%
Energy (kcal)	446 kcal	22%
Fat	12.9 g	18%
of which Saturates	10.6 g	53%
Carbohydrate	74.1 g	29%
of which Sugars	36.3 g	40%
Protein	5.9 g	12%
Salt	1.99 g	33%

SUPPLEMENTARY
NUTRITIONAL
INFORMATION

HANDLING &
STORAGE
INFORMATION

Directions For Use

Remove product from packaging and consume. Product can be consumed on it's or with ice cream

Storage Instructions

Store at dry ambient conditions.

Shelf Life from Time of Production 273 Days **Exempt From Shelf Life Labelling** No

ORIGIN

Product Country of Origin/Place of Northern Ireland

Provenance

PRODUCT
CHARACTERISTICS
CONFIGURATION

Standards Testing

Case Configuration

Inner Pack Configuration

Total Quantity of Inner Components in 120 Units

Outer Case

PRODUCT
WEIGHTS

Inner Component

Variable Weight Consumer Item Yes

Outer Case

Outer Case Gross Weight 3.4 kg

Outer Case Net Weight 2.82 kg

PRODUCT DIMENSIONS

Inner Component	
Inner Component Depth	50 mm
Inner Component Width	0 mm
Inner Component Height	161 mm
Outer Case	
Outer Case Depth	380 mm
Outer Case Width	295 mm
Outer Case Height	190 mm

PALLET INFORMATION

Quantity of Cases Per Pallet Layer	9 Cases	Pallet Height	2 MTR
Quantity of Layers Per Pallet	9 Layers		
Quantity of Cases Per Pallet	81 Cases		

PACKAGING

Outer Case Packaging						
Type	Materials	Weight	Recycled Plastic %	Recyclable	Returnable	Composite
Case	Paper/Cardboard	578 g	- %			

OTHER INFORMATION CONTACT INFORMATION

Address	Technical Contact
Wafer Enterprise Ltd	Amy Mc Guckin
7 Skeoge Industrial Food Park,	Quality Technician
Londonderry	qualitytechnician@waferltd.co.uk
Derry	
Northern Ireland	<u>P: (Phone)</u> 028 71357135
BT48 8SE	
United Kingdom	
<u>P: (Phone)</u> 028 71357135	
Complaints Contact	Commercial Contact
Wafer Ltd Team	Wafer Ltd Team
Customer Service	Sales Team
sales@waferltd.co.uk	sales@waferltd.co.uk
<u>P: (Phone)</u> 028 71357135	<u>P: (Phone)</u> 028 71357135

The information on the [Erudus System](#) has been supplied by the manufacturers of the products and, whilst the owners of the Erudus System take steps to ensure the information is regularly updated, they give no warranty and no guarantee that the information is accurate. Product information and ingredients may change, please always read product labels carefully in addition to using the information provided by Erudus.

We do not accept liability for any inaccuracies or incorrect information contained on this site. Please visit <http://www.erudus.com/terms-and-conditions> for full terms and conditions.