

Changed Feb 09, 2024 00:00

Reviewed Feb 08, 2024 15:19

Erudus ID ef3dc0f4a2764fb7969ca6378dcae7f3

Version 1.0

WAF117 Tall Rainbow Waffle Cone (105) COPY

Tall Rainbow Waffle Cone 90x29.5g

PRODUCT DESCRIPTION

Tall waffle cone coated with a chocolate flavoured coating and enrobed with coloured sugar strands.

Brand	Wafer Enterprise Ltd
Manufacturer Product Code	WAF117
Manufacturer Version	2
Number	
Effective Date	Feb 8, 2024
Product Type	Food
Product Category	Biscuits, Wafers and Crackers
Storage Type	Ambient
Erudus ID	ef3dc0f4a2764fb7969ca6378dcae7f3
Specification Type	Bakery Products



INGREDIENTS

Ingredient Declaration

WHEAT Flour, Sugar, Coconut Fat, Emulsifier: **SOYA** Lecithin, Wheat Fibre, **SOYA** Oil, Flavour, Release Agent: E504, Salt, Icing Sugar (Sugar, Starch), Maize Starch, Un Hydrogenated Vegetable Fat (Palm), Water, Emulsifier (Rapeseed Lecithin), Glaze [Glazing Agents (Acacia Gum, Sugar, Maize Protein)], Colours (E129, E102, E132, E110, E122, E124, E151), Sugar, Vegetable Oil (Palm, Palm Kernel), Fat Reduced Cocoa Powder, Fortified **WHEAT** Flour (**WHEAT** Flour, Calcium Carbonate, Niacin, Iron, Thiamine), Whey Powder (**MILK**), Emulsifiers: Lecithin (**SOYA**), E476; Natural Flavouring. [**BARLEY**], Sugar 54.5%; Vegetable Fat (Palm Kernel) 32.0%; Fat-Reduced Cocoa Powder 13.0%; Emulsifier: Lecithin (**SOYA**) <1%; Natural Vanilla Flavouring <1% [**MILK**].

ALLERGENS

Product Contains:

Celery/Celery	No	Mustard	No
Cereals Containing Gluten	Yes	Nuts (Tree)	No
Barley	Yes	Almond nuts	No
Oats	May Contain	Brazil nuts	No
Rye	May Contain	Cashew nuts	No
Wheat (including Spelt and Khorasan)	Yes	Hazelnuts	No
Crustacea	No	Macadamia (Queensland) nuts	No
Eggs	May Contain	Pecan nuts	No
Fish	No	Pistachio nuts	No
Lupin	No	Walnuts	No
Milk	Yes	Peanuts	May Contain
Molluscs	No	Sesame Seeds	No
		Soybeans	Yes
		Sulphur Dioxide and Sulphites	May Contain

Risk Source:

Additional Allergen Information

May contain Eggs. Packed in a facility that also handles Peanuts and Sulphites.

SUPPLEMENTARY
INGREDIENT
INFORMATION

Palm Oil	Yes
GM Protein/DNA	No

ADDITIVES

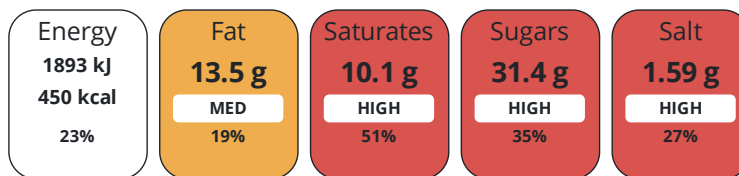
Product Contains:

DIET
SUITABILITY

Vegan Diet	No	Vegetarian Diet	No
Halal Diet	No	Kosher Diet	No

NUTRITIONAL
INFORMATION

Each 100g/ml portion contains:



of your reference intake.

Typical values per 100g/ml : Energy 450kcal / 1893kj

Nutrient	per 100g	RI per 100g
Energy (kJ)	1893 kJ	23%
Energy (kcal)	450 kcal	23%
Fat	13.5 g	19%
of which Saturates	10.1 g	51%
Carbohydrate	75.5 g	29%
of which Sugars	31.4 g	35%
Protein	5 g	10%
Salt	1.59 g	27%

SUPPLEMENTARY
NUTRITIONAL
INFORMATION

HANDLING &
STORAGE
INFORMATION

Directions For Use

Remove product from packaging and consume. Product can be consumed on it's or with ice cream.

Storage Instructions

store in dry ambient conditions

Shelf Life from Time of Production	252 Days	Exempt From Shelf Life Labelling	No
---	----------	---	----

ACCREDITATIONS/
CERTIFICATIONS/
ASSURANCE
SCHEMES



ORIGIN

Product Country of Origin/Place of Northern Ireland

Provenance

PRODUCT
CHARACTERISTICS

Standards Testing

Do you undertake trend analysis of microbiological results?	No	Is shelf life testing undertaken?	No
--	----	--	----

CONFIGURATION

Case Configuration Inner Pack Configuration

Total Quantity of Inner Components in Outer Case 90 Units

PRODUCT WEIGHTS

Inner Component	
Variable Weight Consumer Item	No
Inner Component Weight	29.5 g
Outer Case	
Outer Case Gross Weight	5.29 kg
Outer Case Net Weight	2.65 kg

PRODUCT DIMENSIONS

Inner Component	
Inner Component Depth	161 mm
Inner Component Width	0 mm
Inner Component Height	50 mm
Outer Case	
Outer Case Depth	38 mm
Outer Case Width	30 mm
Outer Case Height	19 mm

PALLET INFORMATION

Quantity of Cases Per Pallet Layer	81 Cases	Pallet Height	2 MTR
Quantity of Layers Per Pallet	9 Layers		
Quantity of Cases Per Pallet	9 Cases		

OTHER INFORMATION CONTACT INFORMATION

Address
Wafer Enterprise Ltd
7 Skeoge Industrial Food Park,
Londonderry
Derry
Northern Ireland
BT48 8SE
United Kingdom

P: (Phone) 028 71357135

Complaints Contact

Wafer Ltd Team
Customer Service
sales@waferltd.co.uk

P: (Phone) 028 71357135

Technical Contact

Amy Mc Guckin
Quality Technician
qualitytechnician@waferltd.co.uk

P: (Phone) 028 71357135

Commercial Contact

Wafer Ltd Team
Sales Team
sales@waferltd.co.uk

P: (Phone) 028 71357135

The information on the [Erudus System](#) has been supplied by the manufacturers of the products and, whilst the owners of the Erudus System take steps to ensure the information is regularly updated, they give no warranty and no guarantee that the information is accurate. Product information and ingredients may change, please always read product labels carefully in addition to using the information provided by Erudus.

We do not accept liability for any inaccuracies or incorrect information contained on this site.
Please visit <http://www.erudus.com/terms-and-conditions> for full terms and conditions.