

Changed Sep 12, 2024 00:00

Reviewed Sep 11, 2024 14:35

Erudus ID d10852ac1b9f41f2a8a77890c4c07763

Version 4.0

WAF142 Tall Smarty Pants Waffle Cone (90)

Tall Smarty Pants Waffle Cone 90x33.5g

PRODUCT DESCRIPTION

Moulded gold-brown ice cream cones designed for scooped or soft ice cream, enrobed in chocolate flavouring and crushed coloured chocolate beans

Brand	Wafer Enterprise Ltd
Manufacturer Product Code	WAF142
Manufacturer Version	4
Number	
Effective Date	Sep 11, 2024
Product Type	Food
Product Category	Biscuits, Wafers and Crackers
Storage Type	Ambient
Erudus ID	d10852ac1b9f41f2a8a77890c4c07763
Specification Type	Bakery Products



INGREDIENTS

Ingredient Declaration

Wheat Flour, Sugar, Coconut Fat, Emulsifier: **Soya** Lecithin, **Wheat** Fibre, **Soya** Oil, Flavour, Release Agent: E504, Salt, Sugar, Cocoa Mass, Cocoa Butter, Whole **Milk** Powder, Starch, Emulsifier: Lecithins, Glazing Agents: Arabic Gum, Carnauba Wax, Beeswax, Juice Concentrates Of: Grape, Radish, Blackcurrant, Lemon, Red Beet, Extracts Of: Carthamus, Malt From Barley, Algae Concentrate, Sugar, Vegetable Oil (Palm, Palm Kernel), Fat Reduced Cocoa Powder, Fortified **Wheat** Flour (**Wheat** Flour, Calcium Carbonate, Niacin, Iron, Thiamine), Whey Powder (**Milk**), Emulsifiers: Lecithin (**Soya**), E476; Natural Flavouring. [**Barley**], Sugar 54.5%; Vegetable Fat (Palm Kernel) 32.0%; Fat-Reduced Cocoa Powder 13.0%; Emulsifier: Lecithin (**Soya**) <1%; Natural Vanilla Flavouring <1% [**Milk**]

ALLERGENS

Product Contains:

Celery/Celериac	No	Mustard	No
Cereals Containing Gluten	Yes	Nuts (Tree)	No
Barley	Yes	Almond nuts	No
Oats	No	Brazil nuts	No
Rye	No	Cashew nuts	No
Wheat (including Spelt and Khorasan)	Yes	Hazelnuts	No
Crustacea	No	Macadamia (Queensland) nuts	No
Eggs	May Contain	Pecan nuts	No
Fish	No	Pistachio nuts	No
Lupin	No	Walnuts	No
Milk	Yes	Peanuts	May Contain
Molluscs	No	Sesame Seeds	No
		Soybeans	Yes
		Sulphur Dioxide and Sulphites	May Contain

Risk Source:

Eggs (Risk Source)	Factory	Peanuts (Risk Source)	Factory
Sulphur Dioxide and Sulphites (Risk Source)	Factory		

Allergen Statement On Pack

May contain egg. Packed in a factory which also handles Peanuts and Sulphites.

SUPPLEMENTARY INGREDIENT INFORMATION

Palm Oil	Yes
GM Protein/DNA	No

ADDITIVES

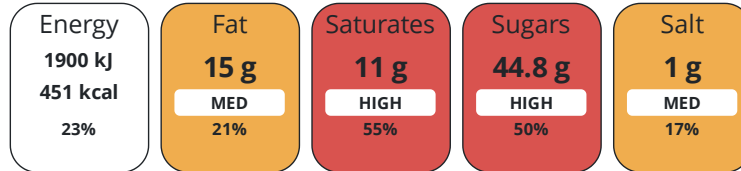
Product Contains:

Artificial Antioxidants	No	Artificial Flavourings	No
Artificial Colours	No	Artificial Preservatives	No
Artificial Flavour Enhancers	No	Artificial Sweeteners	No
Vegan Diet	No	Vegetarian Diet	Suitable for
Halal Diet	No	Kosher Diet	No

DIET SUITABILITY

NUTRITIONAL INFORMATION

Each 100g/ml portion contains:



of your reference intake.

Typical values per 100g/ml : Energy 451kcal / 1900kj

Nutrient	per 100g	RI per 100g
Energy (kJ)	1900 kJ	23%
Energy (kcal)	451 kcal	23%
Fat	15 g	21%
of which Saturates	11 g	55%
Carbohydrate	73 g	28%
of which Sugars	44.8 g	50%
Fibre	2.8 g	
Protein	5 g	10%
Salt	1 g	17%
Sodium	0.57 mg	

SUPPLEMENTARY NUTRITIONAL INFORMATION

HANDLING & STORAGE INFORMATION

Directions For Use

Remove product from packaging and consume. Product can be consumed on it's or with ice cream.

Storage Instructions

Store at room temperature, in a dry place.

Shelf Life from Time of Production 252 Days

ACCREDITATIONS/ CERTIFICATIONS/ ASSURANCE SCHEMES ORIGIN

SALSA (Safe & Local Supplier Approval)

Product Country of Origin Northern Ireland

Origin of the Primary Ingredient

PRODUCT CHARACTERISTICS

Standards Testing

	Do you undertake trend analysis of microbiological results?	No	Is shelf life testing undertaken?	No
CONFIGURATION	Case Configuration		Inner Pack Configuration	
	Total Quantity of Inner Components in Outer Case	90 Units		
PRODUCT WEIGHTS	Inner Component			
	Variable Weight Consumer Item	No		
	Inner Component Weight	33.5 g		
	Outer Case			
	Outer Case Gross Weight	3.04 kg		
	Outer Case Net Weight	2.47 kg		
PRODUCT DIMENSIONS	Inner Component			
	Inner Component Depth	161 mm		
	Inner Component Width	50 mm		
	Inner Component Height	0 mm		
	Outer Case			
	Outer Case Depth	380 mm		
	Outer Case Width	295 mm		
	Outer Case Height	190 mm		
PALLET INFORMATION	Quantity of Cases Per Pallet Layer	9 Cases	Pallet Height	2 MTR
	Quantity of Layers Per Pallet	9 Layers		
	Quantity of Cases Per Pallet	81 Cases		
OTHER INFORMATION CONTACT INFORMATION	Address		Technical Contact	
	Wafer Enterprise Ltd 7 Skeoge Industrial Food Park, Londonderry Derry Northern Ireland BT48 8SE United Kingdom		Amy Mc Guckin Quality Technician qualitytechnician@waferltd.co.uk	
	P: (Phone) 028 71357135		P: (Phone) 028 71357135	
	Complaints Contact		Commercial Contact	
	Wafer Ltd Team Customer Service sales@waferltd.co.uk		Wafer Ltd Team Sales Team sales@waferltd.co.uk	
	P: (Phone) 028 71357135		P: (Phone) 028 71357135	

The information on the [Erudus System](#) has been supplied by the manufacturers of the products and, whilst the owners of the Erudus System take steps to ensure the information is regularly updated, they give no warranty and no guarantee that the information is accurate. Product information and ingredients may change, please always read product labels carefully in addition to using the information provided by Erudus.

We do not accept liability for any inaccuracies or incorrect information contained on this site.
Please visit <http://www.erudus.com/terms-and-conditions> for full terms and conditions.